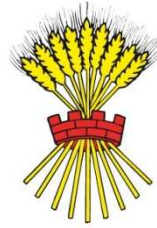


RYEDALE
DISTRICT
COUNCIL



Ryedale District Council

Community Infrastructure Levy
Revised Draft Charging Schedule

Published December 2014

The Charging Authority

This Community Infrastructure Levy (CIL) Revised Draft Charging Schedule has been published by Ryedale District Council. The Council will be both a Charging Authority and a Collecting Authority.

Statutory Compliance

The Draft Charging Schedule was approved for publication at the 18 December meeting of Full Council. It is published in accordance with Part 11 of the Planning Act 2008 (as amended), and the Community Infrastructure Levy Regulations 2010 (as amended).

In setting its CIL rates in accordance with Regulation 14(1) of the Community Infrastructure Levy Regulations 2010, Ryedale District Council has aimed to strike what is believed by the council to be an appropriate balance between:

- The desirability of funding from CIL (in whole or part) the estimated total cost of infrastructure required to support the development of the District, taking into account other actual and expected sources of funding; and
- The potential effect (taken as a whole) of the imposition of CIL on the economic viability of development across the District.

Justifying the Introduction of CIL

At the time of publishing (December 2014), the Council has identified an infrastructure funding gap of **£63,870,000**.

As a part of the economic viability study that supports the charging schedule, a revenue projection has been produced to identify the potential revenue from the proposed CIL rates over the life of the development plan. This figure is estimated at £6,240,615, approximately £416,041 per annum.

Scope of CIL

The following development types will be liable to CIL:

- Development comprising 100m² or more of new build floorspace;
- Development of less than 100m² of new build floorspace that results in the creation of one or more dwellings, but excluding self-build properties; and
- The conversion of a building that has not been in use for at least 6 continuous months during the last three years.

CIL Exemptions and Relief

The CIL regulations provide for certain types of development to be exempt or eligible for relief from CIL, as set out below:

Development exempt from CIL

- The conversion of any building previously used as a dwelling house to two or more dwellings
- Development of less than 100m² of new build floorspace, provided that it does not result in the creation of a new dwelling
- The conversion of a building in lawful use, or the creation of additional floor-space within the existing structure of a building in lawful use
- Development of buildings and structures into which people do not normally go (eg, pylons, wind turbines, electricity sub stations)

Development entitled to Mandatory Relief from CIL

- Development by registered charities for the delivery of their charitable purposes, as set out in Regulation 43 of the Community Infrastructure Levy Regulations 2010
- Those parts of a development which are to be used as social housing, as set out in Regulation 49 of the Community Infrastructure Levy Regulations 2010

Where planning permission is granted for a new development that involves the extension or demolition of a building in lawful use, the level of CIL payable will be calculated based on the net additional floorspace. This means that the existing floorspace contained in the building to be extended or demolished will be deducted from the total floorspace of the new development, when calculating the CIL liability.

The definition of lawful use is contained in Regulation 6 (11(ii)) of the Community Infrastructure Levy Regulations 2010 (as amended), which states the following:

“contains a part that has been in lawful use for a continuous period of at least six months within the period of three years ending on the day planning permission first permits the chargeable development”

CIL Rates

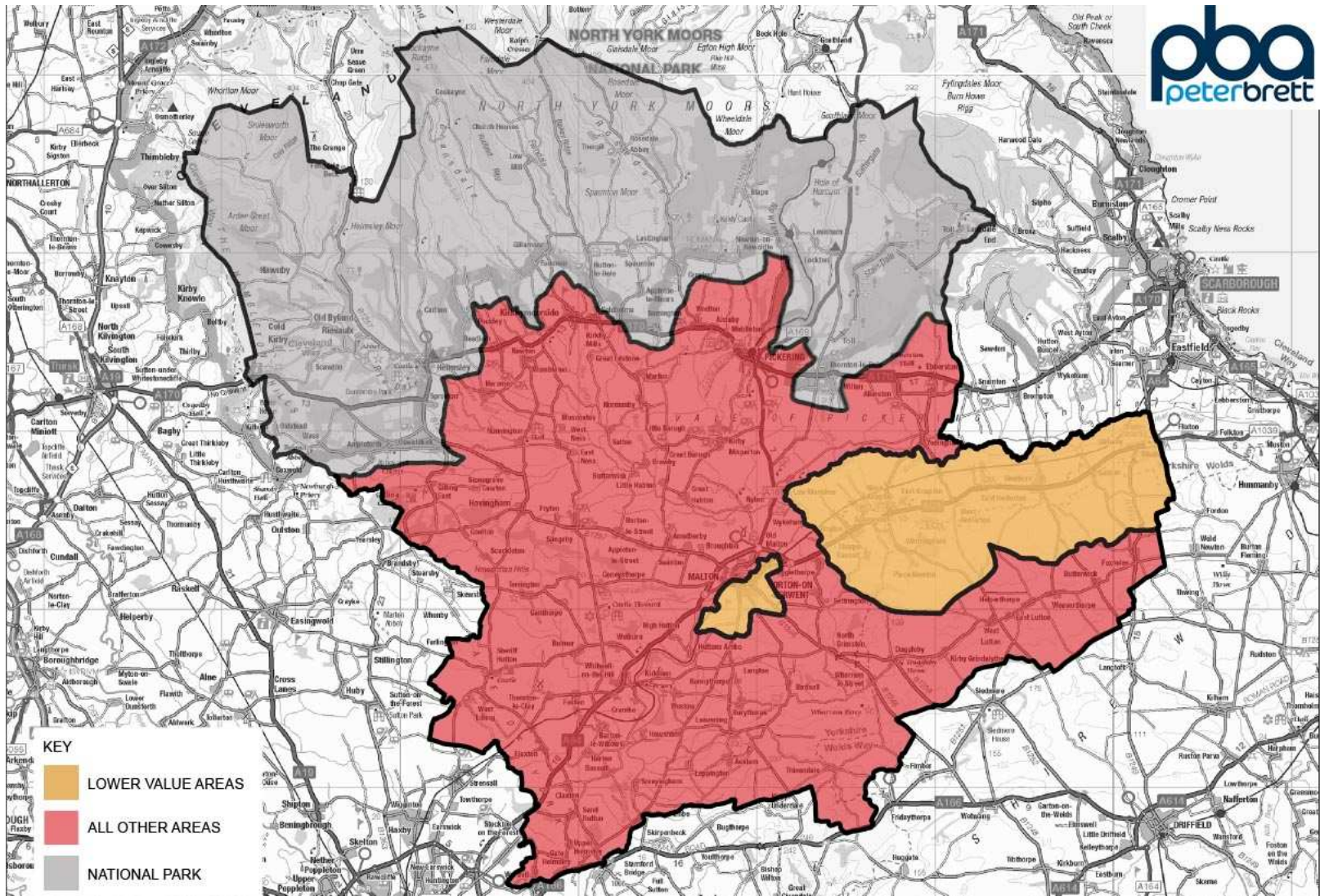
The Revised Draft Charging Schedule Report, undertaken by Peter Brett Associates (formerly Roger Tym and Partners), informs and provides the viability evidence for the CIL rates proposed by Ryedale District Council. The proposed charging schedule is as follows:

Use	CIL Charge per sq. m
Private market houses (excl. apartments)	
Low value areas	£45
All other areas	£85
Supermarkets	£120
Retail Warehouse	£60
Public/Institutional facilities as follows: education, health, community and emergency services	£0
All other chargeable development (incl. apartments)	£0

The definitions of the Supermarkets and Retail Warehouse are as follows:

- Supermarkets – Supermarkets are large convenience-led stores where the majority of custom is from people doing their main weekly food shop. As such, they provide a very wide range of convenience goods, often along with some element of comparison goods. In addition to this, the key characteristics of the way a supermarket is used include:
 - The area used for the sale of goods will generally be above 500 sq. m.
 - The majority of customers will use a trolley to gather a large number of products;
 - The majority of customers will access the store by car, using the large adjacent car parks provided; and
 - Servicing is undertaken via a dedicated service area, rather than from the street.
- Retail Warehouses – Retail warehouses are usually large stores specialising in the sale of household goods (such as carpets, furniture and electrical goods), DIY items and other ranges of goods. They can be stand-alone units, but are also often developed as part of retail parks. In either case, they are usually located outside of existing town centres and cater mainly for car-borne customers. As such, they usually have large adjacent, dedicated surface parking.

The charge zone areas are shown on map shown overleaf.



Supporting Information and Evidence Base

The documents listed below support this CIL Draft Charging Schedule. All documents are available on the Council's website, or can be viewed at the following locations:

- Ryedale Local Plan Strategy (adopted September 2013)
- Ryedale Infrastructure Delivery Plan (January 2012)
- Ryedale Community Infrastructure Levy Viability Assessment (August 2013)
- Ryedale Community Infrastructure Levy Addendum Report (January 2014)
- Ryedale Community Infrastructure Levy Revised Draft Charging Schedule Report (December 2014)
- Draft Regulation 123 List